

# I DESIGN FACULTY

GRIFFITH COLLEGE  
2018

1

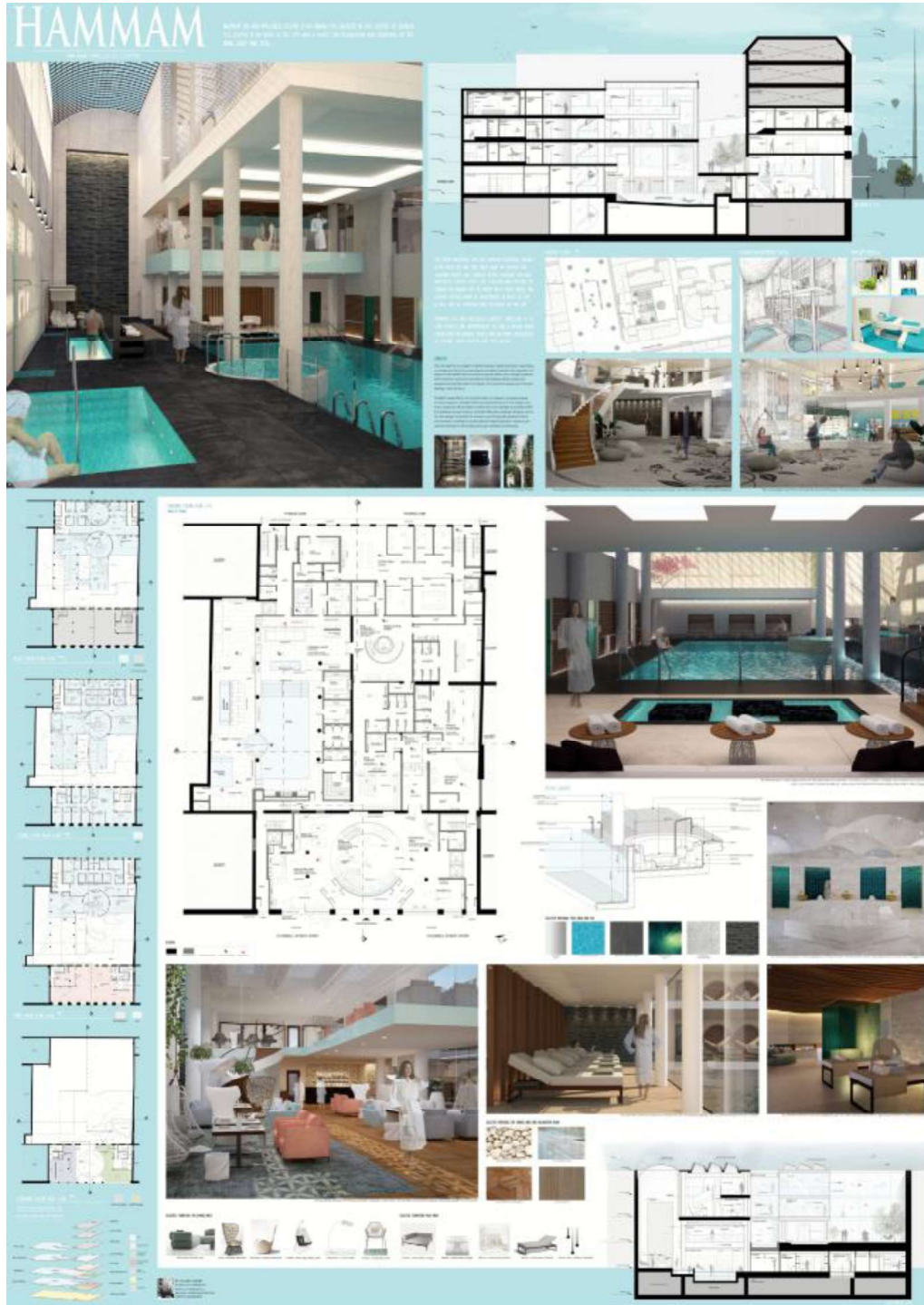
BA IN INTERIOR DESIGN

2

BA(HONS) IN INTERIOR  
ARCHITECTURE

3

BA IN DESIGN  
COMMUNICATIONS



# KUC ENTRY REQUIREMENT

## BA IN INTERIOR DESIGN - Stage 3

- Entry Requirements: Grade C
- 1 week Bridging Course

## BA(HONS) IN INTERIOR ARCHITECTURE - Stage 2

- Duration: 2 years
- Entry Requirements: Grade C
- 1 week Bridging Course

## BA(HONS) IN INTERIOR ARCHITECTURE - Stage 3

- Entry Requirements: Grade C + Portfolio
- 3 week Bridging Course

# PORTFOLIO REQUIREMENT

---

STUDENTS APPLYING FOR THE FOLLOWING  
PROGRAMMES ARE REQUIRED TO PASS A  
PORTFOLIO ASSESSMENT:

- BA(HONS) IN INTERIOR ARCHITECTURE
- BA(HONS) IN DESIGN COMMUNICATIONS

# DRAFT BRIDGING COURSE TIMETABLE 2019-2020

Month	Week	Monday	Tuesday	Wednesday	Thursday	Friday	Saturday	Sunday
AUGUST	1	19 Introduction/ Studio 10 – 1pm	20 CAD 10 – 1pm	21 Building Regulations 10 – 1pm	22 CAD 10 – 1pm	23 CAD 10 – 1pm	24	25
		CAD 2 – 5pm	CAD 2 – 5pm	Building Construction 2 – 5pm	CAD 2 – 5pm	CAD In class test 2 – 5pm		
	2	26 Lighting Design 10 – 1pm	27 Revit 10 – 1pm	28 Revit 10 – 1pm	29 Self-Directed Learning Working on Revit task	30 Revit 10 – 1pm	31	
		Essay Writing /Research Methods /Harvard Referencing	Revit 2 – 5pm	Revit 2 – 5pm	Self-Directed Learning Working on Revit task	Revit 2 – 5pm		
SEPTEMBER	3	2 Revit 10 – 1pm	3 Revit 10 – 1pm	4 Revit DS003 10 – 1pm	5 Self-Directed Learning Working on Revit task	6 Revit 10 – 1pm	7	8
		Revit 2 – 5pm	Revit 2 – 5pm	Revit 2 – 5pm	Self-Directed Learning Working on Revit task	Revit In class test 2 – 5pm		

Bridging course Start Date: 19<sup>th</sup> August 2019  
 Bridging course End Date: 23<sup>rd</sup> August 2019  
 Induction Week Start Date: 11<sup>th</sup>–12<sup>th</sup> September 2019  
 Lectures Start Date: 16<sup>th</sup> September 2019



# 5 MODULE STRANDS

STAGE	SEMESTER	DESIGN	DESIGN COMMUNICATION	DESIGN CULTURE	TECHNOLOGY	BUSINESS
1	1	Interior Spatial Projects 1	Design Graphics 1	History of Interior Design	Ergonomics and Anthropometrics	
			Architectural Drafting		Building Regulations	
	2	Interior Spatial Projects 2	Computer Aided Design	Design Culture And Theory	Materials and Finishes	
2	1	Interior Spatial Projects 3	Introduction to BIM	Design Futures	Furniture and Fittings	Brand & Marketing
	2	Interior Spatial Projects 4	BIM 3D Modelling		Building Construction Lighting Design	Entrepreneurship & Business
3	1	Interior Spatial Projects 5	BIM Collaboration	Thesis	Conservation and Interior Environments	
	2	Interior Spatial Projects 6	3D Visualisation		Green Design and Sustainability Materials Science and Structural Mechanics	Business Practice Management

# — **SKILLS TO LEARN**

## DESIGN

- ANALYSE THE REQUIREMENTS AND RESPOND TO A COMPLEX DESIGN BRIEF THROUGH THE DEVELOPMENT OF ACCURATE DESIGN DETAILING, SELECTION OF APPROPRIATE FITTINGS AND FURNITURE, MATERIALS AND FINISHES.
- APPLY THE DESIGN STAGES TO INTERIOR ARCHITECT PROJECTS
- RE-IMAGINE NEW FUNCTIONS OR AN EXISTING BUILT ENVIRONMENT, THROUGH SPACE PLANNING AND SPATIAL DESIGN.

## DESIGN COMMUNICATION

- USE COMPUTER AIDED TOOL (AUTOCAD, REVIT, 3D MAX AND V RAY) FOR TECHNICAL DRAWINGS AND PROJECT VISUALISATION

## DESIGN CULTURE

- PRESENT AND COMPILE AN ACADEMIC THESIS ON A SPECIALIST AREA WITHIN THE PRACTICE OF DESIGN IN A PROFESSIONAL MANNER

**GRIFFITH COLLEGE 2019**

# — SKILLS TO LEARN

## TECHNOLOGY

- APPLY PRINCIPLES OF CONSERVATION OF EXISTING BUILDING FABRIC
- DEVELOP A STRATEGY FOR SUSTAINABILITY AND PRODUCE DESIGN SOLUTIONS USING NEW, INNOVATIVE AND SUSTAINABLE MATERIALS IN PROJECT WORK.
- DEMONSTRATE KNOWLEDGE OF THE STRUCTURE, PROPERTIES, PERFORMANCE AND CHARACTERISTICS OF INTERIOR MATERIALS

## BUSINESS

- RECOGNISE THE ADDED VALUE OF PROJECT MANAGING AND APPLY PROJECT MANAGEMENT PRINCIPLES TO ORGANISE, PLAN AND MANAGE A DESIGN PROJECT
- APPRAISE THE LEGAL AND PROFESSIONAL ENVIRONMENT AND ASSOCIATED REQUIREMENTS RELEVANT TO THE BUILT ENVIRONMENT.

# DESIGN STUDIO

## INTERIOR SPATIAL PROJECTS 1

- Pod
- Set Design

## INTERIOR SPATIAL PROJECTS 2

- Retail
- Café & Exhibition Space

## INTERIOR SPATIAL PROJECTS 3

- Portable Container Cafe and bar
- Office Design Project

## INTERIOR SPATIAL PROJECTS 4

- Adaptive reuse of an Existing Building as a Hotel
- Portfolio

## INTERIOR SPATIAL PROJECTS 5

- Adaptive reuse of Historic Building to Residential Apartment House - Universal Design for Aging Population

## INTERIOR SPATIAL PROJECTS 6

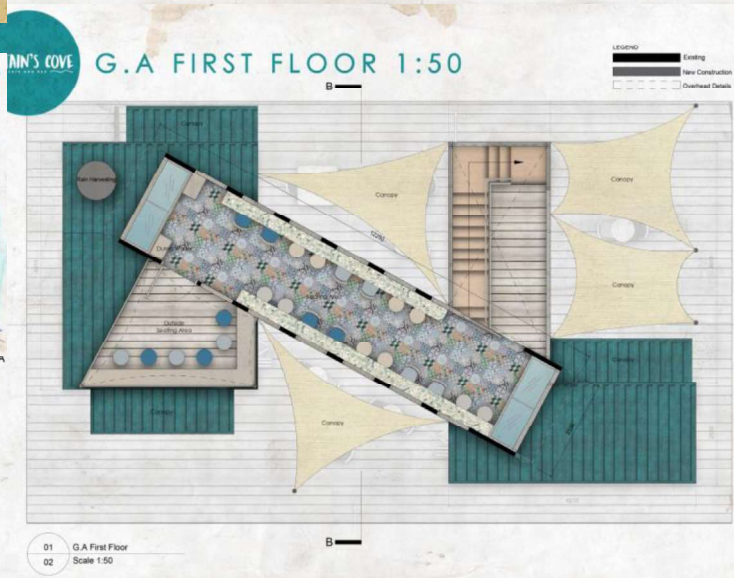
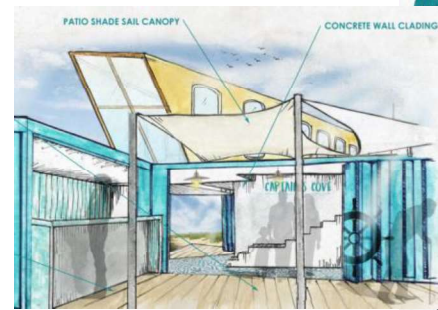
- Thesis - Social Responsibility/ Civic Engagement/ Health Care
- Portfolio

GRIFFITH COLLEGE 2019



DESIGN







## DESIGN





# FINAL YEAR STUDENT WORK (BAIDO)

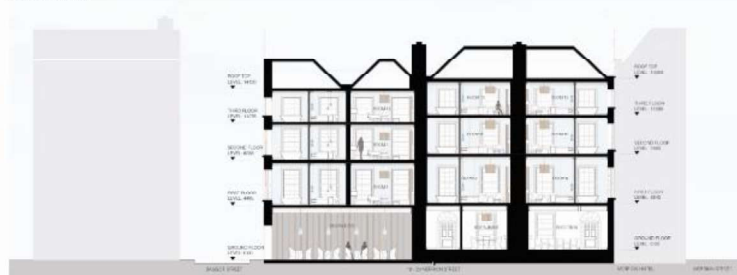
## THE 1760 BOUTIQUE HOTEL



### EXTERIOR



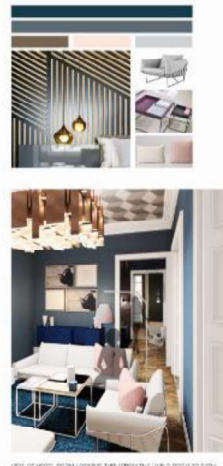
### SECTION 1:75



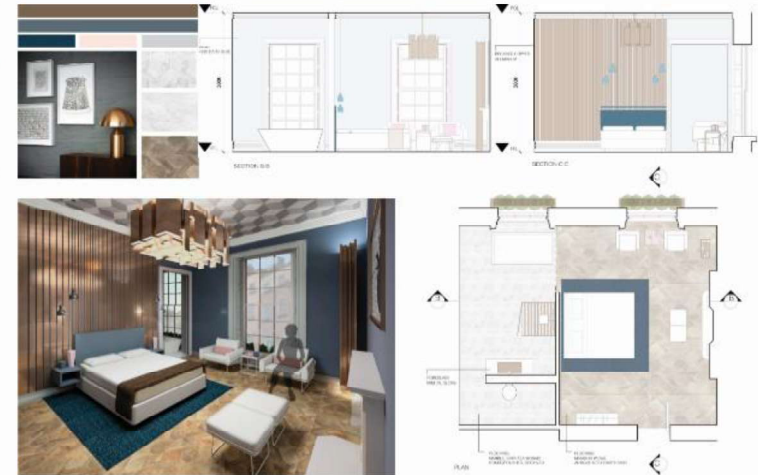
### GROUND FLOOR 1:75



### FIRST FLOOR 1:75



### DETAIL ROOM 3 1:25



### FIRST FLOOR RCP 1:75



DESIGN

## DESIGN



# — **WHY STUDY INTERIOR AT GRIFFITH COLLEGE?**

- An Annual Creative Week
- Internships Experiential learning
- Lecturers practising architects, designers, buyers, and art historians,
- 100% Continuous Assessment course work – no exams





# INDUSTRY CAD SOFTWARE

WE PROVIDE OUR STUDENTS ACCESS TO STATE OF THE ART DESIGN PROGRAMMES, USED IN INDUSTRY

## ADOBE CREATIVE CLOUD

- ADOBE PHOTOSHOP
- ADOBE ILLUSTRATOR
- ADOBE INDESIGN
- SKETCH UP
- AUTODESK AUTOCAD
- 3D MAX



# GENERAL INFO ABOUT STUDYING AT GRIFFITH COLLEGE:

- PER SEMESTER: 4-6 ASSIGNMENTS & 1-2 GROUP ASSIGNMENTS
- 18-20 HRS. WEEKLY LECTURE TIME (1 HR.=60 MIN.)
- TUITION FEES: 10,000 EUROS
- QUALITY AND QUALIFICATIONS IRELAND (QQI) AWARDS
- INSTITUTE OF DESIGNERS IN IRELAND (IDI)
- RECOGNISED BY EUROPEAN COUNCIL FOR INTERIOR ARCHITECTS



**THANK  
YOU!**

