

SOLENT
UNIVERSITY



TOM QUANTE
INTERNATIONAL OFFICER (EUROPE REGION)

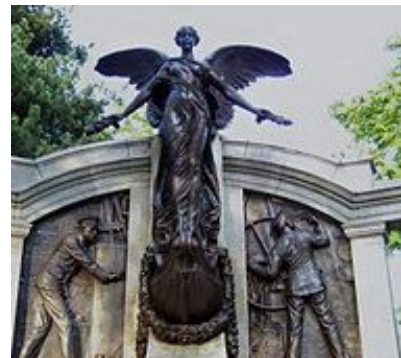
WHERE IN THE UK ARE WE?

SOUTH-EAST ENGLAND, 70 MINS FROM LONDON



MAIN CAMPUS: EAST PARK TERRACE





CITY FACTS

- The largest city in the south-east outside of London
- Just over an hour from London
- Population of over **250,000** people
- Over **30,000** students
- In the UK's **top 10** happiest cities
- **£1.6 billion** of new city developments committed or underway
- **180+** pubs, bars, cafes and restaurants
- One of the greenest cities in the country
- City is ten minutes from Southampton International Airport

CENTRAL CITY LOCATION



Buildings

-  East Park Terrace
-  Sir James Matthews building
-  Below Bar campus
-  Walking route to residences
15 minutes

Student residences

-  Kimber and Moxon
-  Lucia Foster Welch
-  Hamwic
-  Chantry
-  Deanery

FILM AND TELEVISION TOP-UP

Core units

- Television Studio
- Global Screens: The Transmedia Age
- Final Major Project: Production/Dissertation/Script

Options

- Acting and Performance
- The Director
- The Time Machine
- Contemporary British Film
- Sex on Screen
- After 9/11: Film, Television and Culture
- Cine-Extreme: The Cultural Politics of Transgression
- The Musical
- Freelancing at Solent Creatives
- Creative Entrepreneurial Freelance Practice

Please note: Not all optional units are guaranteed to run each year.



MEDIA PRODUCTION TOP-UP

		Practice & Employability Strand			Support Strand
L6	P1	Major Project SOLENT TV 40	Option 1 20	Option 2 20	Study Skills 20
	P2		Working in Creative Media 20	Option 3 20	

Core units

- Working in Creative Media
- Major Project

Options

- Factual Production (Documentary Video)
- Audio Production
- Contemporary Photographic Practice
- Sound Design for the Moving Image
- The Staged Photograph
- Producing for Social Media
- Freelancing at Solent Creatives 2
- Creative Entrepreneurial Freelance Practice 2

Please note: Not all optional units are guaranteed to run each year.



FACILITIES AT SOLENT

- 200 seater HD Multi camera TV studio and performance space
- 3 x HD TV Studios
- OB Truck and Outside Production Support Vehicle
- 8 Radio Studios
- Digital and Digital HD cameras
- 3D Screening Cinema and 3D Cameras
- Professional Standard Photo labs
- Suites of Final Cut Pro Apples
- 5 professional music studios
- 5 professional control rooms
- 4 Protocols mix-down rooms
- 25 G5 Apple Protocols Midi Suite
- Avid certified training



FILM AND MEDIA SUCCESSES

Graduate destinations

Destinations for last year's graduates:

- Freelance content creator, YouTube
- Marketing assistant, Gemini Print
- Software QA tester, Digits Industries Ltd
- Promotions team, Celador Radio
- Production assistant, RJDM Studios
- E-learning support officer, Solent University
- Destinations for the year before last's graduates:
 - Graduate marketing executive, Fusion People
 - Broadcast assistant, BB South East
 - E-marketing executive, Switch Ads
 - Editorial assistant, Hamerville Media
 - Social media account handler, Digital Clarity
 - Content creator, One Pulse
 - Events and marketing co-ordinator, Plymouth and Devon Chamber of Commerce
 - Commercial assistant, Bauer Media Group



ENTRY REQUIREMENTS FOR FILM/ MEDIA

Two Year Diploma in Film	BA (Hons) Media Production (Top Up) BA (Hons) Film and Television (Top Up)	Entry subject to pass at Grade C and successful portfolio viewing; students must meet University Admissions and English Language entry requirements.	Further portfolio guidance available on the Solent University website KPC students who complete the BA (Hons) Media Production (Top-Up) course are encouraged to apply for Solent's MA Film Production course.
--------------------------------	---	--	---



ILLUSTRATION

Level 6 Direct entry

Semester ONE

— Research and Authorship

Essay and visualisation of chosen subject

— Professional Context

Competition Briefs – Penguin Student Design Awards

— Professional Practice

Promotional and industry skills

Semester TWO

— Negotiated Study

Self-initiated research project

— Final Major Project

Body of work for group exhibition



ILLUSTRATION

Level 6 Direct entry

Semester ONE

— Research and Authorship

Essay and visualisation of chosen subject



This module requires a 3,000 word essay and visual outcome.

Over the summer think about areas of interest you may explore. We ask for 3 to 5 working ideas with initial research into those subjects. Your ideas will form the discussions and development of the module. This module is launched in the first week of Semester One.

You **DO NOT** need to produce the finished module over the summer.

ILLUSTRATION SUCCESSES

ODA MARGARETHE KUC OSLO

“ I have 3 projects going at the moment - an essay, a Penguin book cover and a project where I have to interview 300 people asking them what 3 things are dearest to them. All are due by January!”



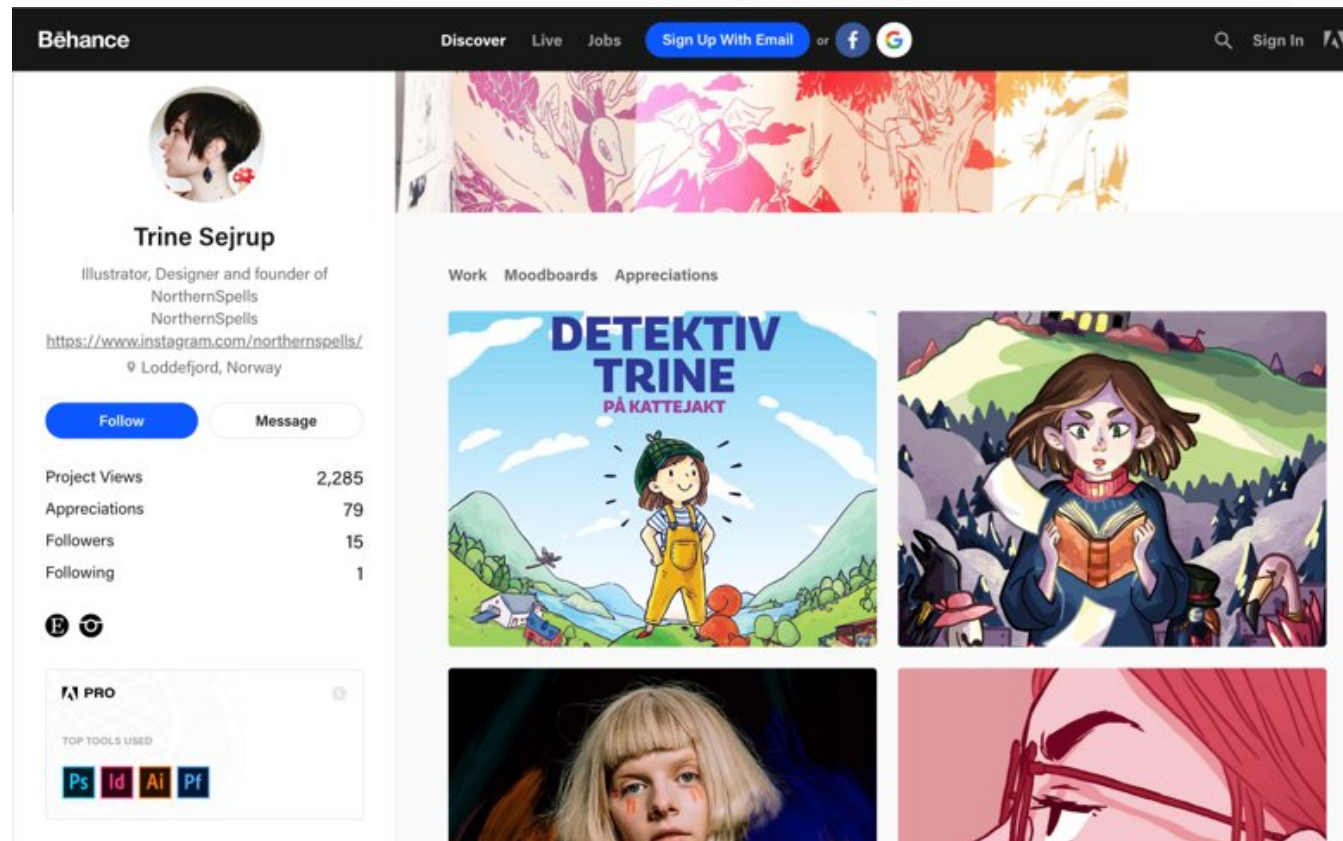
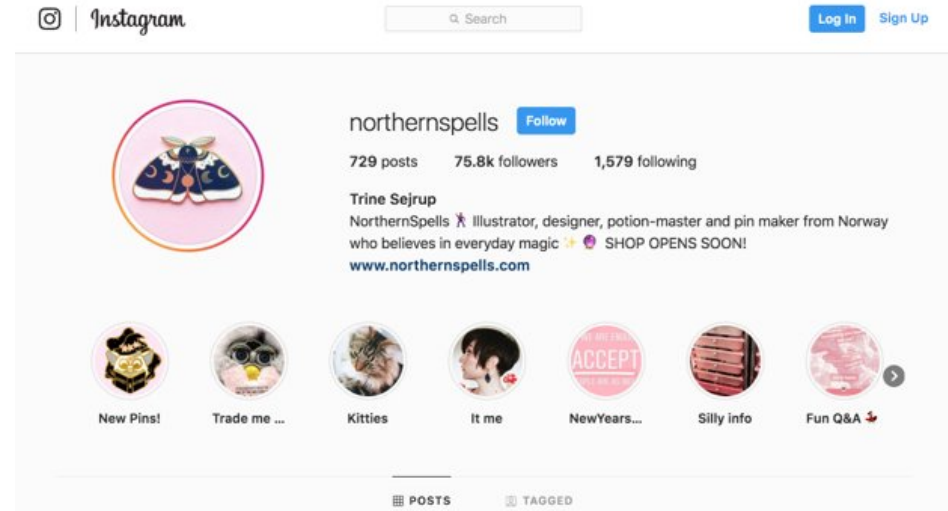
ILLUSTRATION SUCCESSES

ALUMNI

Trine Sejrurp

Founder of
NorthernSpells

Illustrator
Designer



ENTRY REQUIREMENTS FOR ILLUSTRATION

Two Year Diploma in Illustration	BA (Hons) Illustration	Direct entry to Level 6 (Year 3) of the course subject to pass at Grade C and successful portfolio viewing; students must meet University Admissions and English Language entry requirements.	Further portfolio guidance available on the Solent University website KUC students who successfully complete this course are encouraged to apply for relevant Postgraduate courses such as MA Visual Communication.
--	------------------------	--	--



Animation at Solent- Year 3 entry

Year three

Core units

- Pre-Production
- Final Major Project Proposal
- Project

Options

- Dissertation
- Animation Presentation

Please note: Not all optional units are guaranteed to run each year.



MATT BURN
BA (HONS) ANIMATION
AND ILLUSTRATION
GRADUATED 2004

CG SUPERVISOR,
ABSOLUTE POST

“

THIS COURSE IS FOR YOU IF YOU
WANT INVALUABLE EXPERIENCE
LEARNING THE ANIMATION CRAFT
FROM HIGHLY KNOWLEDGEABLE
PROFESSIONALS WITH AS MUCH
PASSION AS THEY HAVE SKILL.”

How did university prepare you for your career?

It gave me a vital grounding in the realities of working HARD for a living. I learnt how to be autonomous but also how to thrive as part of a team, and it taught me to absorb my peers' knowledge whenever I could, which I still do to this day. Knowledge is key – soak it up wherever you can.

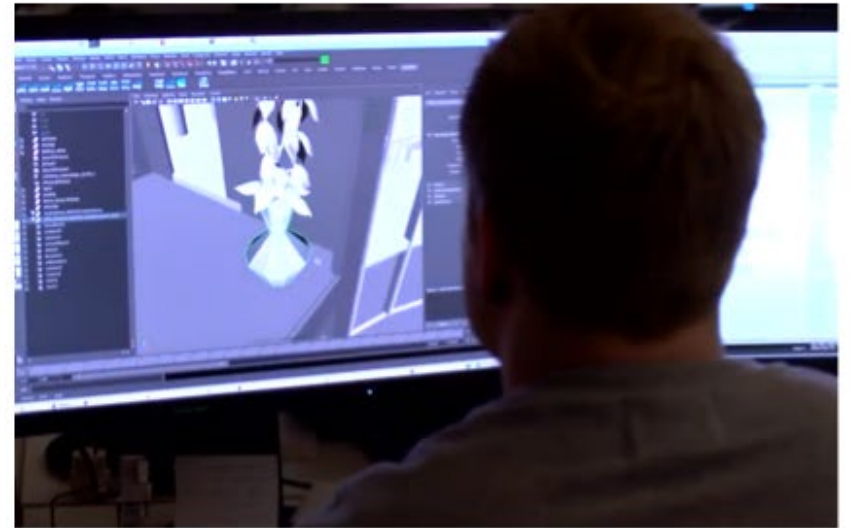


Tell us about your career story so far.

I have been working within the core of the post-production industry for 13 years now at Absolute Post, in the heart of Soho. Starting as a runner, I trained and progressed my career to the point where I am supervising teams of super-talented artists, producing amazing results together, creating pretty pictures which I am very proud of.



Some of our students' work



ANIMATION SUCCESSES

“Ancient Egypt” by Emma Osborne

Over 8 million views on
YouTube

Throughout their studies, students on our BA (Hons) Animation course develop their drawn animation, stop-motion and CGI techniques, working towards creating their final project.

We caught up with Emma-Louise Osborne, a 26-year-old recent animation graduate from Southampton, to find out what inspired her final project....

“Ancient Egypt has been a life-long love of mine, and the idea for the film itself was inspired when I visited Egypt in July 2015. With every ancient structure I saw, the one question that wouldn't leave my head was: “how was this possibly built so many thousands of years ago in a time before machines?”



ENTRY REQUIREMENTS FOR ANIMATION

Two Year
Diploma in
3D Animation

BA (Hons) Animation

Direct entry to
Level 5 (Year 2)
subject to pass at
Grade D and
successful portfolio
viewing; students
must meet
University
Admissions and
English Language
entry requirements.

Direct entry to
Level 6 (Year 3)
subject to pass at
Grade C and
successful portfolio
viewing; students
must meet
University
Admissions and
English Language
entry requirements.

Further portfolio
guidance available on
the Solent University
website

KUC students who
complete the BA
(Hons) Animation
course are
encouraged to apply
for Solent's MA Visual
Communication
course.



MUSIC AT SOLENT



Southampton continues to build on its great tradition for live music, with venues hosting acts ranging from heavy metal to house music. *NME* favourite The Joiners has launched many well-known rock and pop bands. The Hobbit is renowned for folk and rock, the Orange Rooms and Switch draw the best live DJs, while the Platform Tavern is a must for soul and blues.

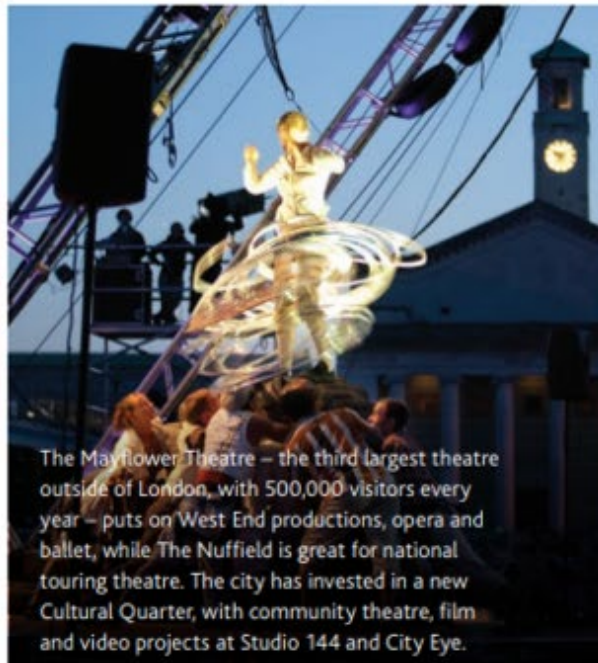


The city is home to the swanky cinema, Showcase Cinema de Lux, independent productions are screened at Harbour Lights and Southampton hosts a summer season of al fresco film.



Stadium acts come to the Ageas Bowl while the O2 Guildhall hosts mainstream pop and rock legends.

Festivals and street music thrive in the city, and our own SO:Music City (formally SMILEfest) attracts top artists.



The Mayflower Theatre – the third largest theatre outside of London, with 500,000 visitors every year – puts on West End productions, opera and ballet, while The Nuffield is great for national touring theatre. The city has invested in a new Cultural Quarter, with community theatre, film and video projects at Studio 144 and City Eye.

Southampton: A musical city

MUSIC AT SOLENT

What you'll study

Year three

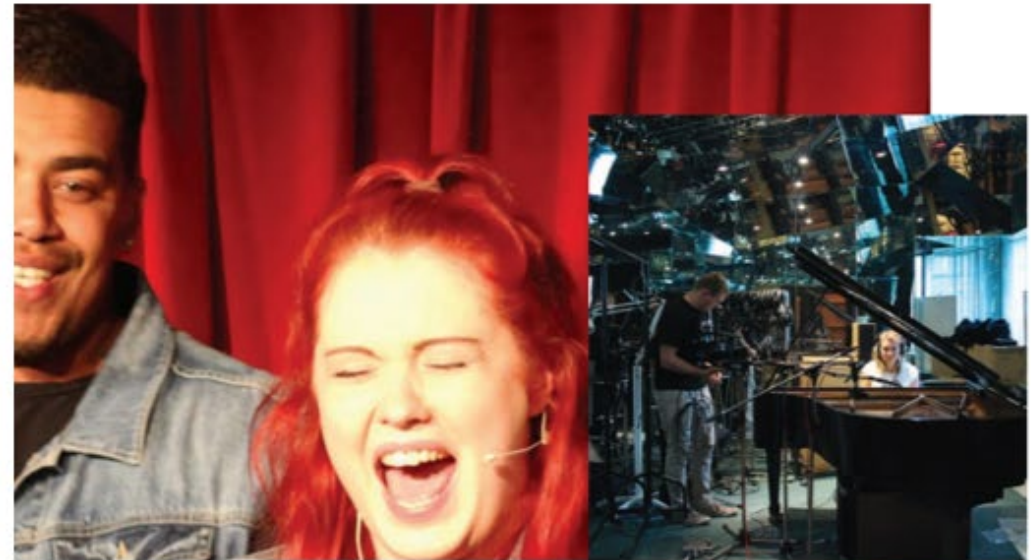
Core units

- Major Project
- Advanced Music Production
- Live Project Brief

Options

- Surround Mixing
- Live Event Technology
- Live Sound Technology
- Experimental Music Production

Please note: Not all optional units are guaranteed to run each year.



MUSIC AT SOLENT

SOLENT MUSIC

*gets your talents out and brings in industry giants from across
the music industries at a wide range of conferences and events.*

Do you want to promote and manage events, book artists and support the local music scene? Are you keen to film, photograph or interview bands? We give you real opportunities to build your experience and help your career.

We promote Solent student music and music businesses through our website and social media.

We support your music releases, concerts, club nights, magazines and many other projects, and help you with management, promotion and journalism.

We hold live gigs, electronic music nights and outdoor shows at Engine Rooms, *NME* favourite The Joiners, Art House, Metricks and Palmerstone Park.



MUSIC AT SOLENT

Music Successes

- Samm Henshaw – Touring supporting James Bay
- Restless Symphony – BBC 'Naked Choir' with Gareth Malone



MUSIC AT SOLENT

Recent successes



During your studies you will have the chance to work with local clients to develop your skills further, these clients have recently included the Joiners Live venue and BBC Introducing.

Recent speakers have included:

- Andrew Scheps, mix engineer for Red Hot Chili Peppers
- Nina Hartstone, dialog editor, *Bohemian Rhapsody*
- Colin Lester, manager for Craig David
- Tudor Davies, sound engineer for *Later with Jools Holland*.

ENTRY REQUIREMENTS FOR MUSIC

Two Year Diploma in Music	BA (Hons) Popular Music Production BA (Hons) Digital Music	Direct entry to Level 5 (Year 2) subject to pass at Grade D and successful portfolio viewing; students must meet University Admissions and English Language entry requirements. Direct entry to Level 6 (Year 3) subject to pass at Grade C and successful portfolio viewing; students must meet University Admissions and English Language entry requirements	Further portfolio guidance available on the Solent University website
---------------------------------	--	---	--



TOP SIGHTS IN SOUTHAMPTON

- Home of the SeaCity Museum
- Solent Sky Aviation Museum
- MayFlower Theatre Group
- Two large shopping complexes: WestQuay and The Marlands.
- Guildhall Square: The City's cultural quarter
- 02 Southampton Concert and Exhibition Hall
- St Mary's Stadium: home to Premier League side Southampton FC
- Ocean Village marina
- Historic City walls and Bargate





ACCOMMODATION

A PLACE OF YOUR OWN

❖ STUDENT RESIDENCES

- En-suite rooms (approx. £5,700)
- Non en-suite rooms (approx. £4,900 to £5,000)

Instalments: accommodation fees can be spread across the whole year and paid in either 3 equal instalments - normally October, January and May; or 8 equal monthly instalments.

❖ PRIVATE SECTOR

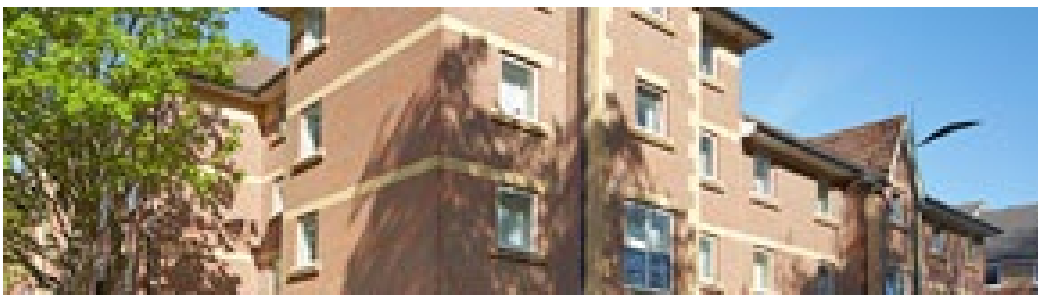
Private housing

University Accreditation Scheme
SASSH (www.sassh.co.uk)

Private student residences

Liberty Living, Unilife, Vita, the Student Housing Company, Collegiate AC and more.

Free access to Solent Sports Complex: gym and classes





SOLENT
UNIVERSITY

Tom.quante@solent.ac.uk

www.solent.ac.uk/international

